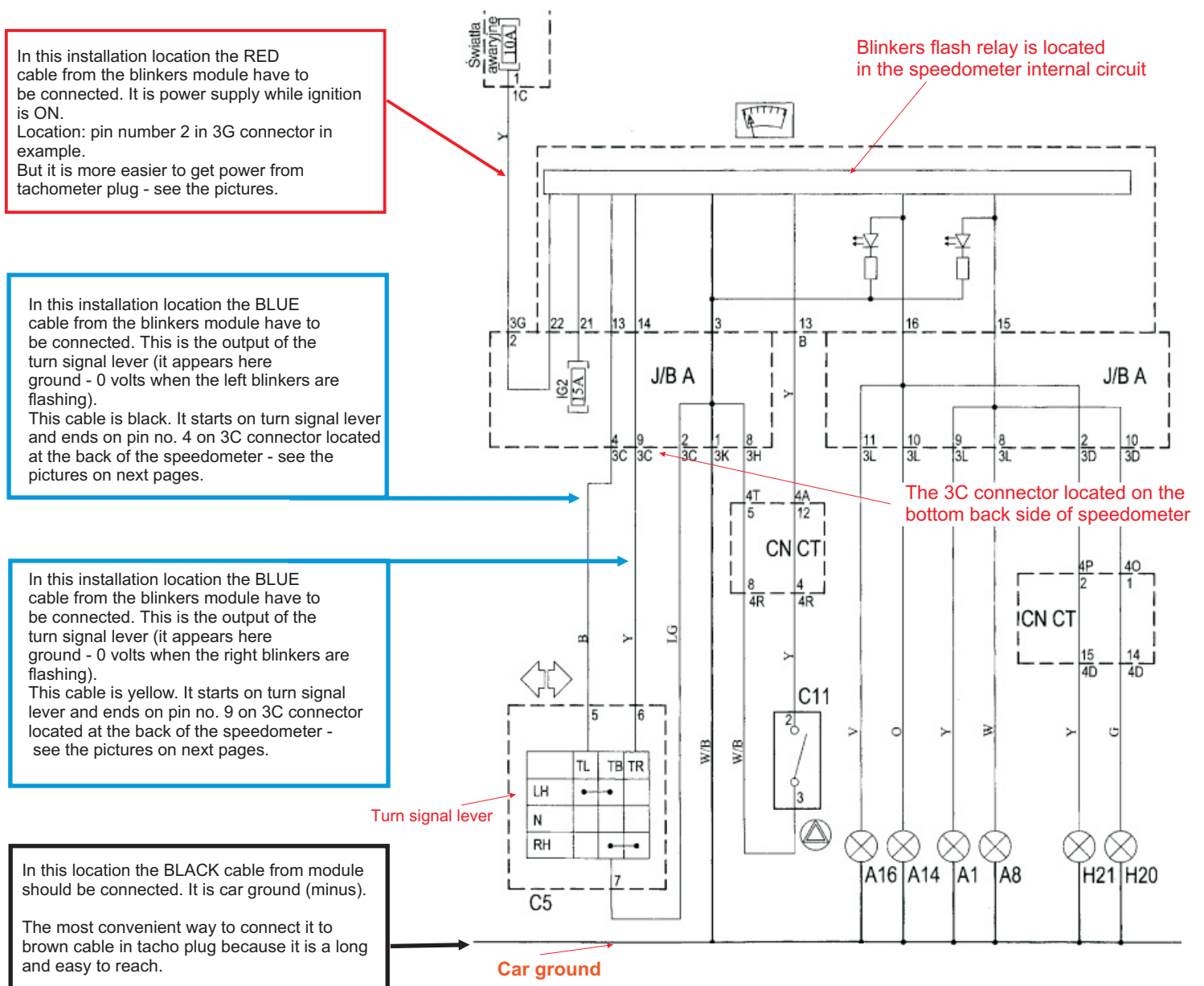
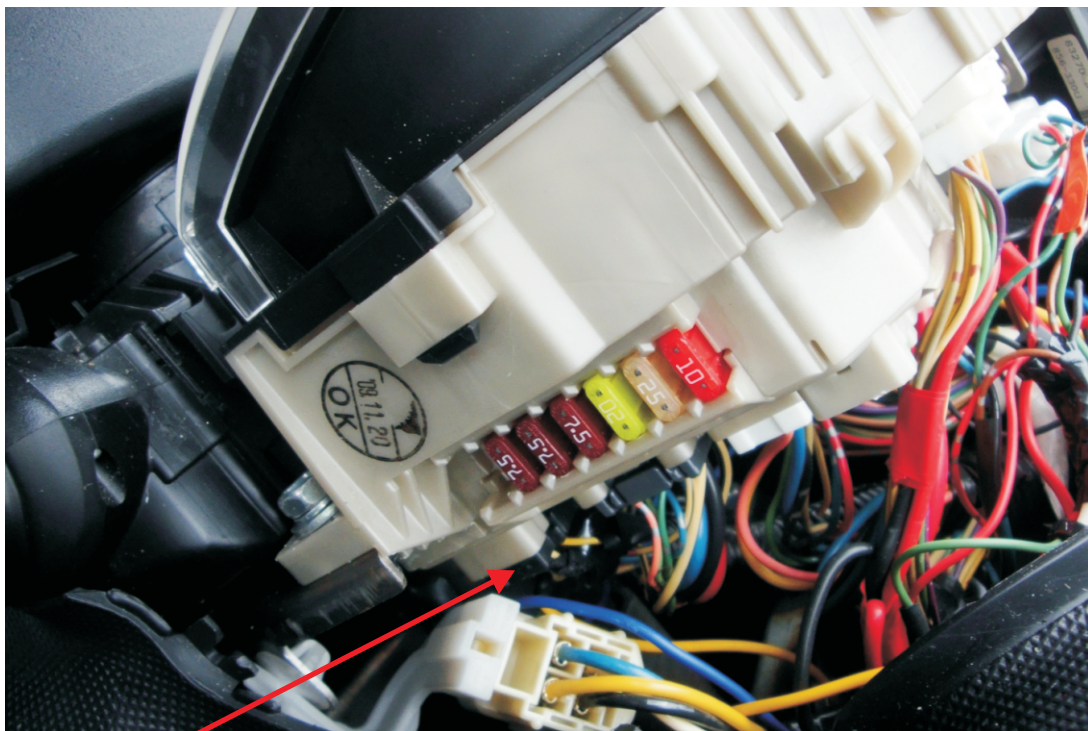
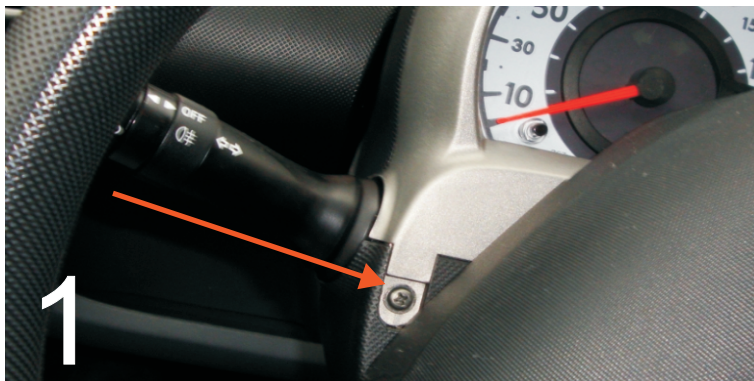
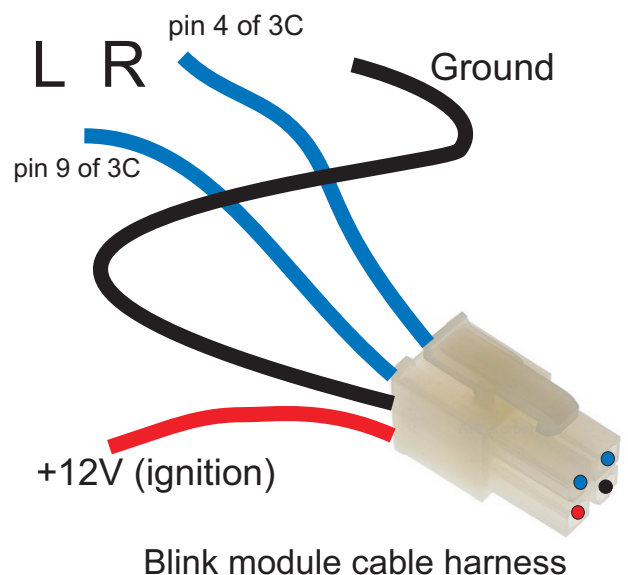
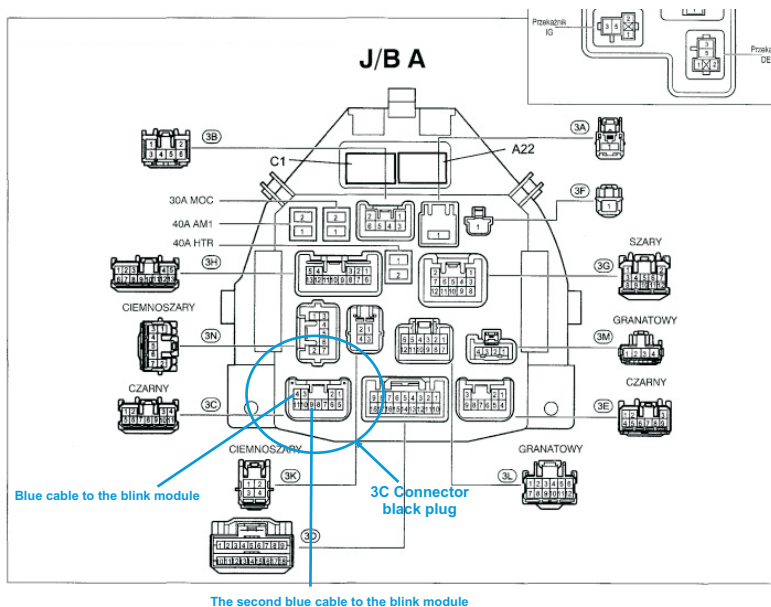

Connection can be made by cutting the wire, and then soldering together the two ends of the cable with the third one leading to the module. All soldering joints should be well isolated by vinyl tape. The work takes about an hour but if you're not sure you can handle this task to pass a car electrician. You need a socket wrench #10, screwdriver, soldering iron and duct tape.

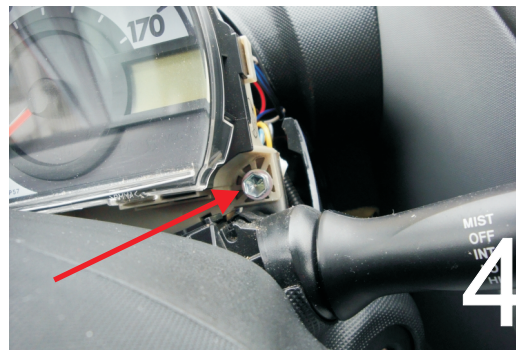
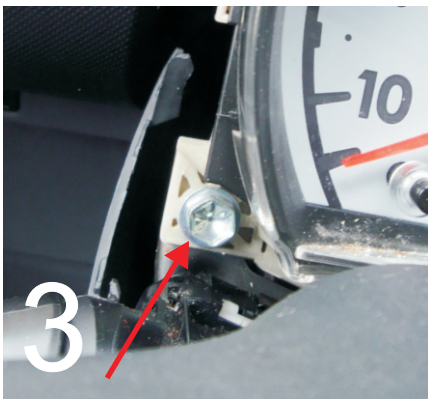


Back view of the speedometer



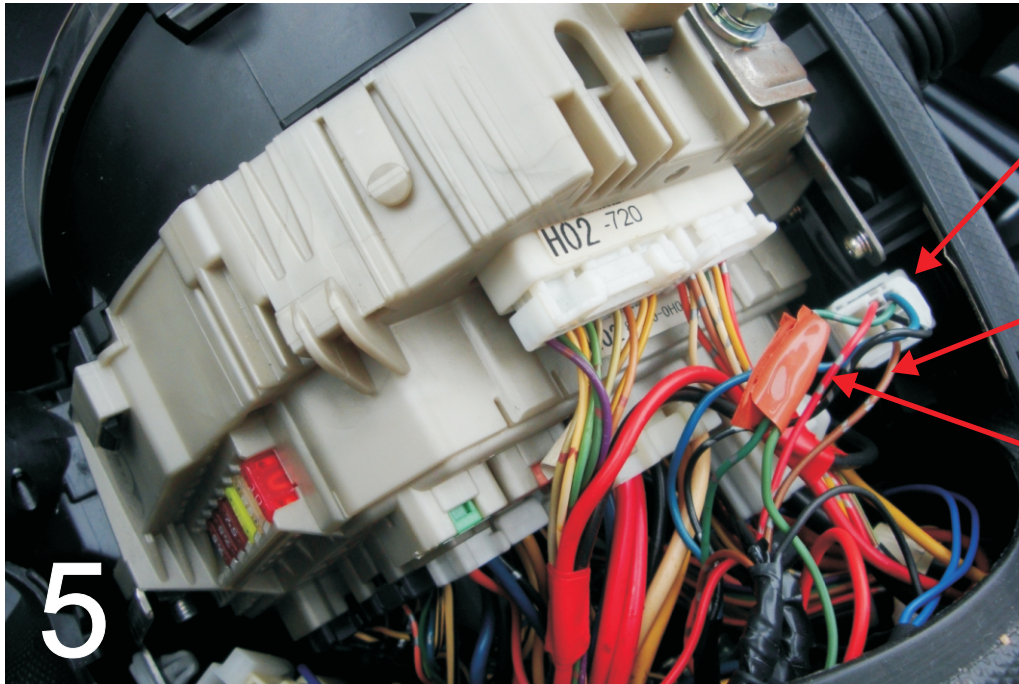
At the beginning you have to **remove the spherical speedometer enclosure**. For this purpose, unscrew the screws marked. Getting up for them need to rotate the steering wheel a half turn. After loosening the screws, you can release the cover up.

The **3C connector with blinkers wires** is located at the bottom of the speedometer in the place indicated by the arrow. The access to the cables is not easy, hence you have to unscrew the two screws that secure the speedometer like in the next two pictures. After unscrewing the fixing screws the access to the connector is much more convenient and allows you to connect the blink module wire harness. However, the work is full of comfort when unplugging all connectors from the speedometer.



Speedometer assembly mounting screws

Top view of the speedometer



Tachometer connector

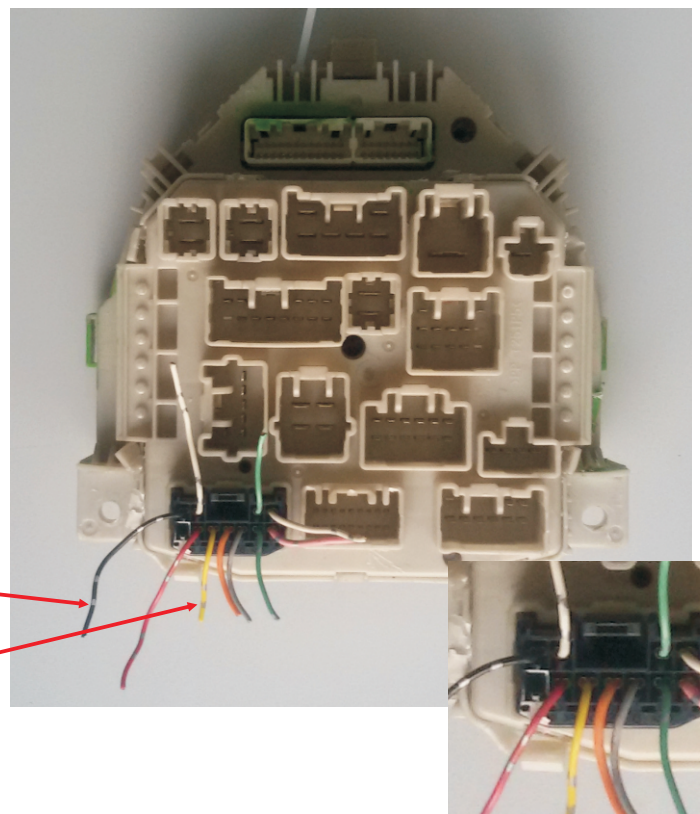
Car ground (-)

+12 V to the blink module

Connector for tachometer is easily accessible and it is convenient to connect the power positive and negative (ground) lines to the module. Required +12V power signal is on **red** cable, ground (minus) is on **brown** as shown by the arrows in the

Back speedometer connector view.

In the figure all plugs are removed except the one with connection to the turn signal lever. To the wires marked below the blue cables from comfort blink module harness should be soldered. All connection should be then well isolated by vinyl tape. The blink module can be hidden below dashboard. It's a good idea to wrap the enclosure with foam to prevent the circuit from rattling while driving. When the ignition is on, the LED hidden in module enclosure will flash twice to indicate proper working state. After that the comfort blinker is ready to work.



Black wire should be soldered to blue module harness cable

Yellow wire should be soldered to the another blue harness cable